

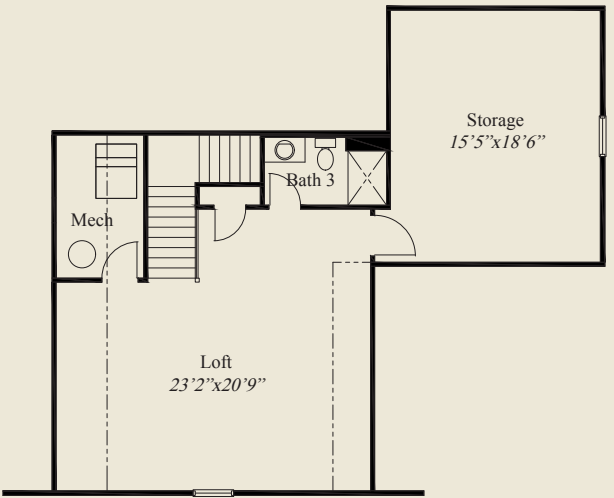


- ### Plan Information
- 3,116 SqFt
  - 2 Bedrooms
  - 3 1/2 Baths
  - 2 Car Garage (Oversize)
  - Large Front Porch
  - Great Room w/13'6" Ceiling
  - 10' Ceilings, 8' Doors on First Floor
  - Cathedral/Vaulted Ceiling in Kitchen & Dining
  - Large Kitchen w/Chefs Pantry
  - Garage Mud Entry w/Closet
  - Owners Suite w/Oversize Shower & Wardrobe
  - 1st Floor Guest Suite w/Private Bath
  - Library w/Double Doors
  - Large Rear Veranda w/13'6" Ceiling
  - Large Second Floor Loft w/Full Bath & Storage

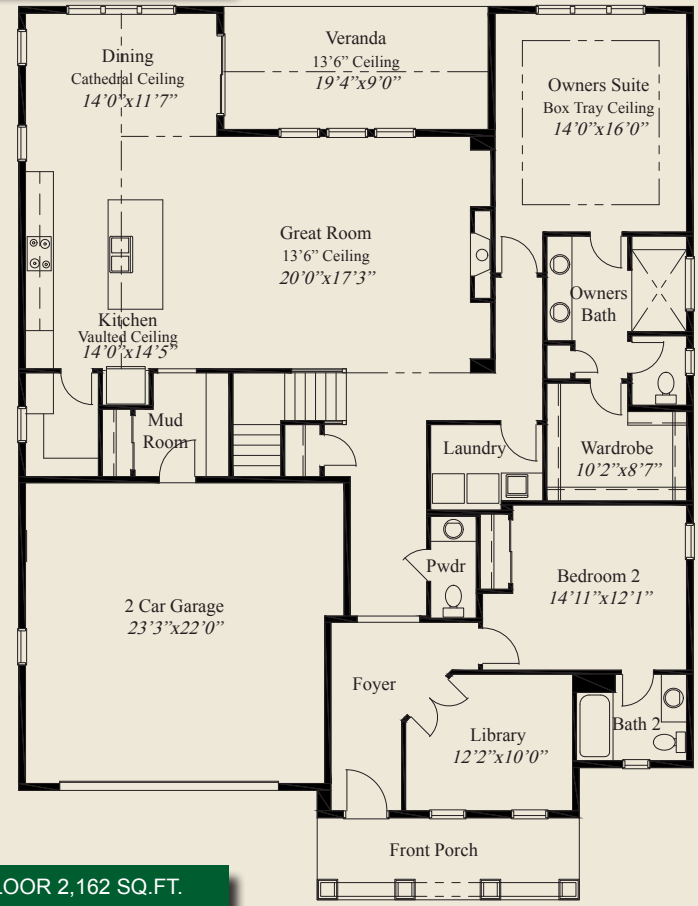
**Home Information**

This custom patio home features easy access with open living and entertaining, a 13'6" ceiling great room and cathedral/vaulted ceiling in the kitchen and dining. 10' ceilings and 8' doors are on the first floor. The kitchen includes a chefs pantry. The owners suite features a box tray ceiling, oversized shower and wardrobe. A covered veranda w/13'6" ceiling, library w/double doors, guest suite w/private bath, and a second floor loft with full bathroom, and large storage area, complete this beautiful home.

© Romanelli & Hughes Building Co. All home plans present on this brochure are protected by copyright. Reproduction either in whole or in part without written permission is strictly prohibited. All renderings and floor plans are artists' conceptions and are not intended to be an actual depiction of the home or its surroundings.



FINISHED LOFT 954 SQ.FT.



FIRST FLOOR 2,162 SQ.FT.

