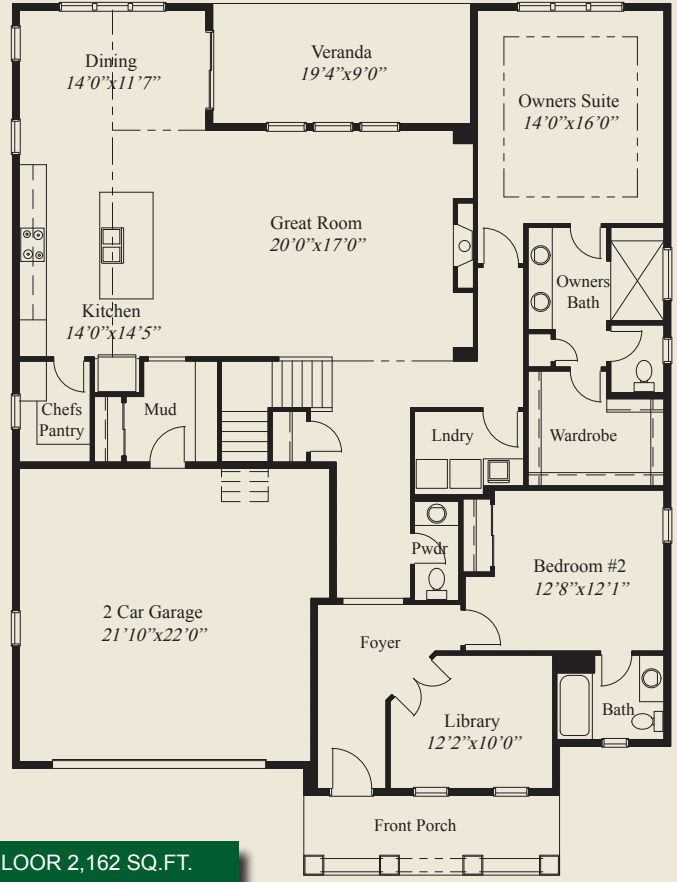
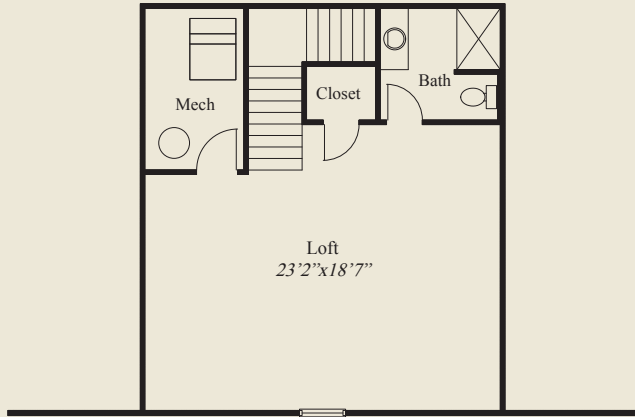




- Plan Information**
- 2,799 SqFt
 - 2 Bedrooms
 - 3 1/2 Baths
 - 2 Car Garage
 - Large Front Porch
 - Private Mud Entry
 - 10' Ceilings, 8' Doors on First Floor
 - Cathedral Ceiling in Great Rm, Kitchen, Dining
 - Chefs Pantry w/Appliance Counter
 - Garage Mud Entry w/Optional Bench
 - Owners Suite w/Oversize Shower & Wardrobe
 - 1st Floor Guest Suite
 - Library w/Double Doors
 - Large Rear Veranda
 - Large Second Floor Loft w/Full Bathroom

Home Information

This custom patio home features easy access with open living and entertaining, cathedral ceiling in the great room, kitchen and dining and 10' ceilings and 8' doors on the first floor. The private mud entry has bench and closet space. The kitchen includes a chefs pantry. The owners suite features a box tray ceiling, an oversized shower and wardrobe. A covered veranda, library w/double doors, 1st floor guest suite, and a second floor loft with full bathroom, complete this beautiful home.



© Romanelli & Hughes Building Co. All home plans present on this brochure are protected by copyright. Reproduction either in whole or in part without written permission is strictly prohibited. All renderings and floor plans are artists' conceptions and are not intended to be an actual depiction of the home or its surroundings.

FINISHED LOFT 637 SQ.FT.

FIRST FLOOR 2,162 SQ.FT.

