



**Plan Information**

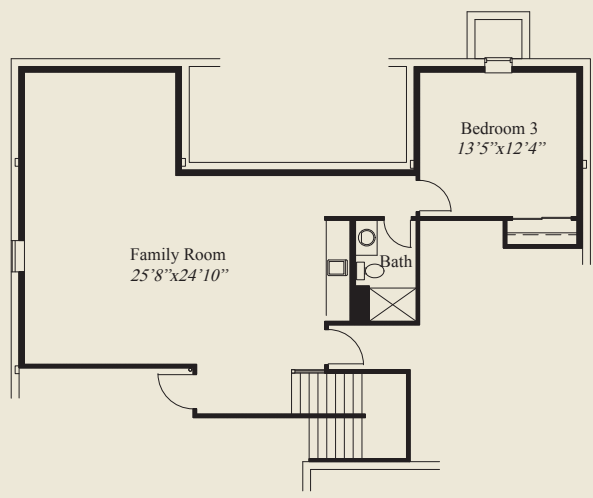
- 3,091 SqFt
- 3 Bedrooms
- 3 1/2 Baths
- 2 Car Garage
- 10' Ceilings, 8' Doors
- Ceiling Treatments in Owner & Great Room
- 12' Box Beam Ceiling in Great Room
- Walk-in Pantry w/Appliance Counter
- Library w/Double Glass Doors
- Garage Mud Entry w/Bench & Closet
- Owners Suite w/Oversize Shower & Wardrobe
- Laundry Adjacent to Owners Wardrobe
- Guest Bedroom w/Private Bath
- Covered Rear Veranda
- Finished LL w/Family Room, Bedroom, Bath

© Romanelli & Hughes Building Co.  
 All home plans present on this brochure are protected by copyright. Reproduction either in whole or in part without written permission is strictly prohibited. All renderings and floor plans are artists' conceptions and are not intended to be an actual depiction of the home or its surroundings.

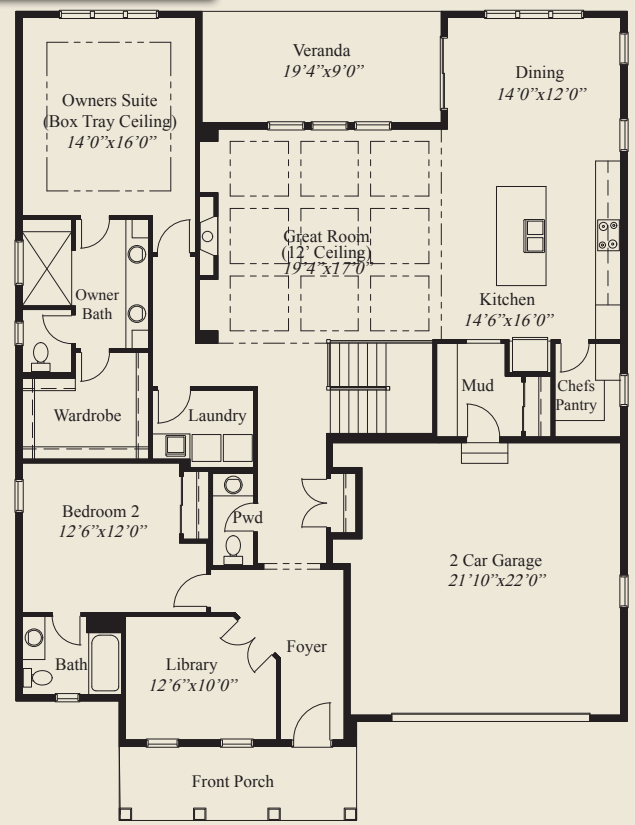


**Home Information**

This custom patio home features a spacious great room with 12' box beam ceiling with a view to a covered veranda. 10' ceilings and 8' doors are throughout the first floor. A mud entry from the oversized garage offers bench space and a closet. The kitchen includes a chefs pantry with an appliance counter. The owners suite features a box tray ceiling, an oversized shower and spacious wardrobe. A library w/ double glass doors, guest bedroom w/private bath, and a finished lower level family room with 3rd bedroom & bath, all add to the appeal of this beautiful home.



LOWER LEVEL 915 SQ.FT.



FIRST FLOOR 2,176 SQ.FT.

