



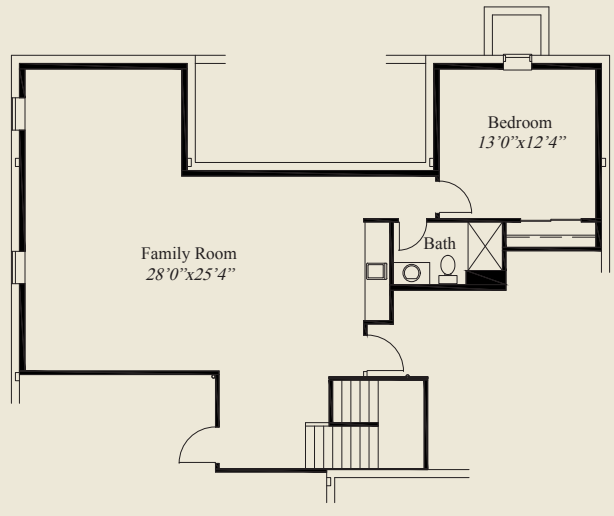
Craftsman



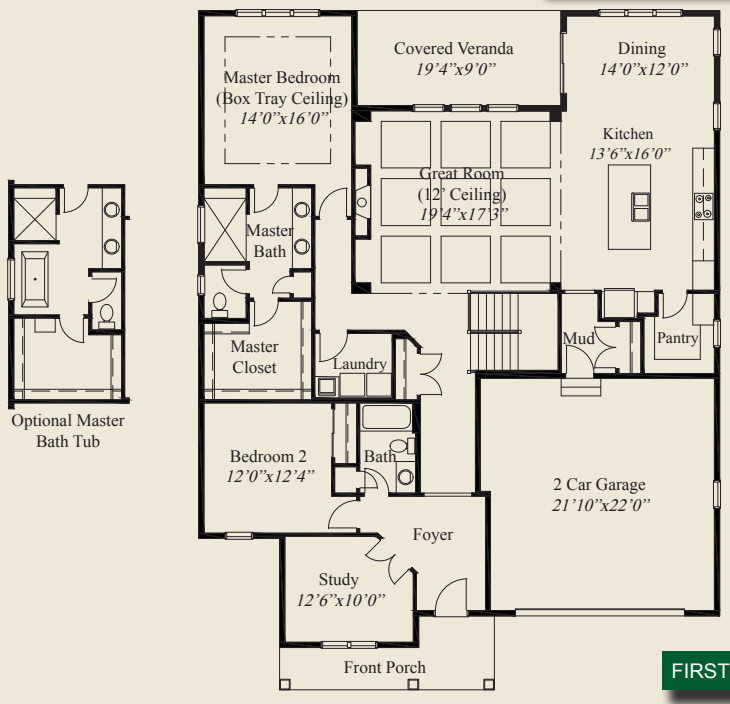
Farm House

Plan Information

- 2,142 SqFt
- 2 Bedrooms
- 2 Baths
- 2 Car Garage (Oversize)
- 10' Ceilings & 8' Doors Throughout
- 12' Great Room Box Beam Ceiling
- Foyer w/ Double Glass Doors to Study
- Walk-in Pantry w/ Appliance Counter
- Optional Grocery Door from Garage
- First Floor Guest Bedroom
- Master Suite w/ Oversize Shower & Closet
- Laundry Adjacent to Master w/ Opt. Door
- Switch Back Stairs to Full Basement
- Full Basement for Optional Finish



OPTIONAL FINISHED LOWER LEVEL 975 SQ.FT.



FIRST FLOOR 2,142 SQ.FT.



© Romanelli & Hughes Building Co.
 All home plans present on this brochure are protected by copyright. Reproduction either in whole or in part without written permission is strictly prohibited. All renderings and floor plans are artists' conceptions and are not intended to be an actual depiction of the home or its surroundings.