

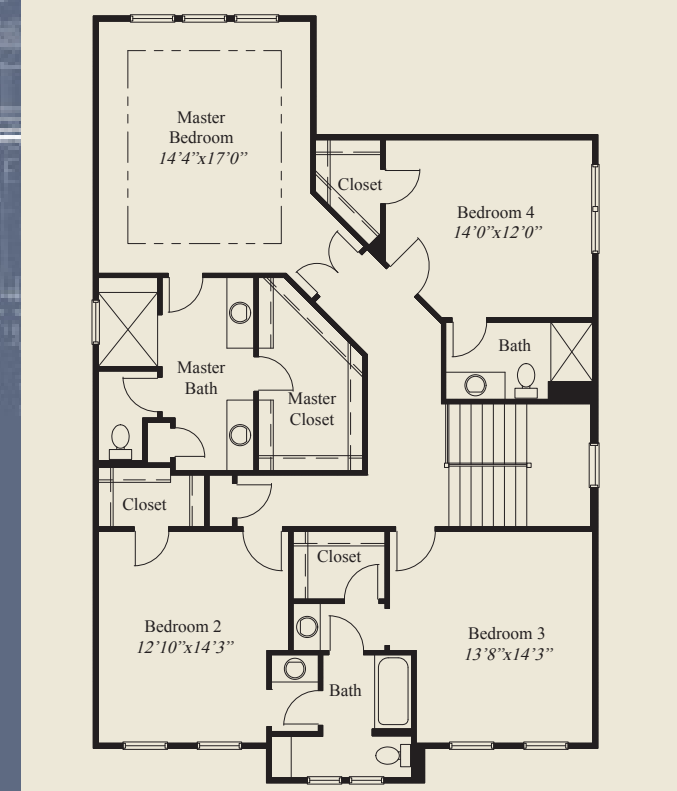
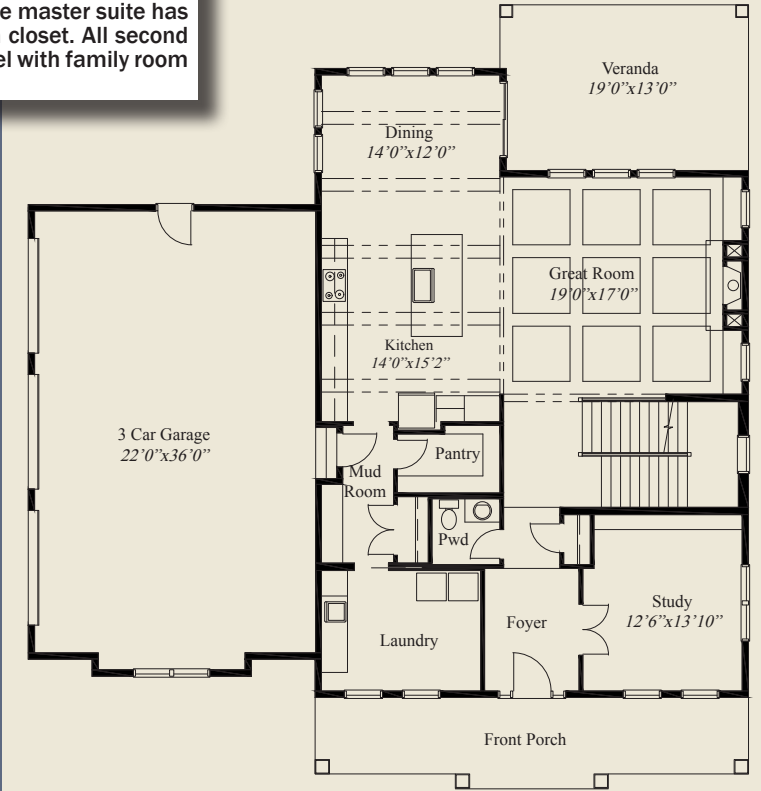
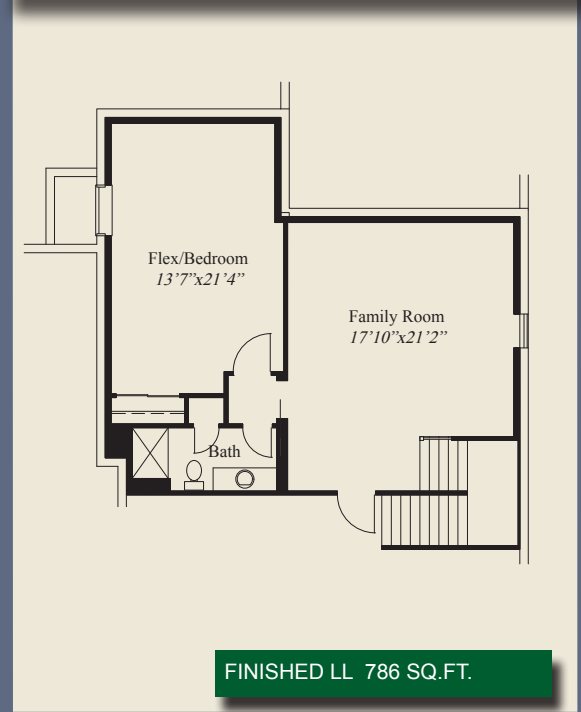


Plan Information

- 3,854 SqFt
- 4 Bedrooms
- 4 1/2 Baths
- 3 Car Garage (Oversize)
- Large Front Porch
- Mud Room w/Long Bench, Closet, Walk-in Pantry
- First Floor 11' Ceilings, 8' Doors
- Decorative Beamed Ceilings Great Rm, Kitchen
- Study w/Double Glass Doors
- Switch Back Stairs w/Windows on Landings
- Master Suite w/Double Doors & Walk-in Closet
- All 2nd Floor Bedrooms w/Walk-in Closets
- Finished LL w/ Family Room, Flex/Bedroom, Bath
- Covered Rear Veranda



This custom home has a large front porch and 11' ceilings and 8' doors on the first floor. Decorative beamed ceilings adorn the open living and entertainment areas. A formal foyer has double glass doors to the study and the switch back stairs include windows at each landing. The master suite has a double door entry, oversized shower & spacious walk-in closet. All second floor bedrooms have walk-in closets. The finished lower level with family room and flex/bedroom and bath complete this beautiful home.



© Romanelli & Hughes Building Co.  
 All home plans present on this brochure are protected by copyright. Reproduction either in whole or in part without written permission is strictly prohibited. All renderings and floor plans are artists' conceptions and are not intended to be an actual depiction of the home or its surroundings.

