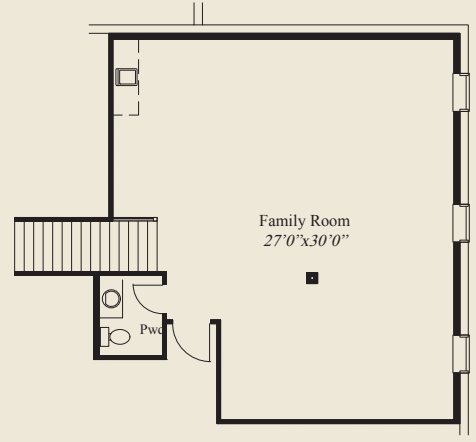


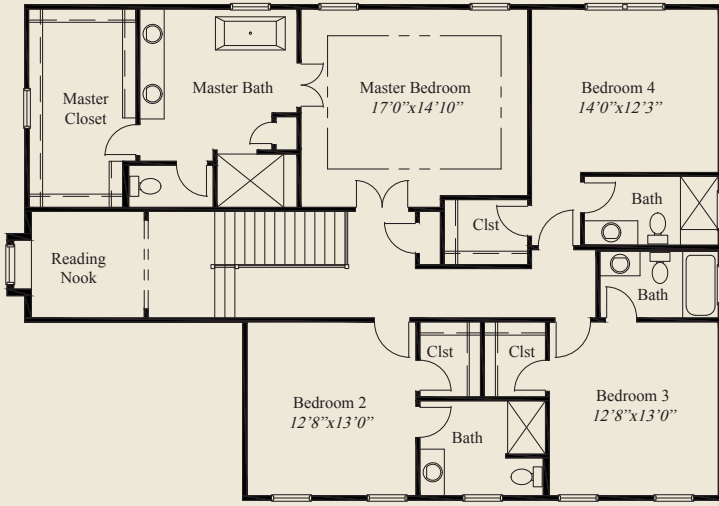


This custom home features a huge kitchen and walk-in pantry. There are 11' ceilings and 8' tall doors on the first floor and 9' ceilings on the second floor. The private study has a sliding barn door and the spacious mud room has a bench, closet and desk. The spacious laundry has extra cabinets. The second floor has a reading nook and the master suite features a tub, shower, and oversized walk-in closet. The finished LL family room includes a powder room & optional wet bar.

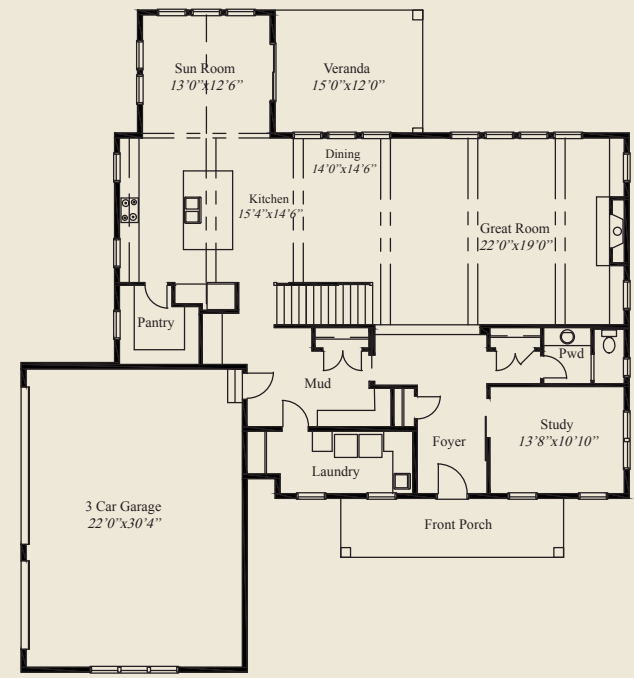
- ### Plan Information
- 4,469 SqFt
  - 4 Bedrooms
  - 4 1/2 + 1/2 Baths
  - 3 Car Garage
  - Huge Kitchen w/Walk-in Pantry
  - 11' Ceilings, 8' Doors on 1st Floor
  - 9' Ceilings on 2nd Floor
  - Large Mudroom w/Bench, Clst., Desk
  - Private Study w/Barn Door
  - Sun Room
  - Laundry w/Extra Cabinets
  - Luxury Master Bath w/Tub & Shower
  - Reading Nook
  - All Bedrooms w/Walk-in Closets
  - Finished LL Family Room w/Opt. Wet Bar & Shower Rough-in



FINISHED LL 793 SQ.FT.



SECOND FLOOR 1,734 SQ.FT.



FIRST FLOOR 1,942 SQ.FT.

© Romanelli & Hughes Building Co. All home plans present on this brochure are protected by copyright. Reproduction either in whole or in part without written permission is strictly prohibited. All renderings and floor plans are artists' conceptions and are not intended to be an actual depiction of the home or its surroundings.

