



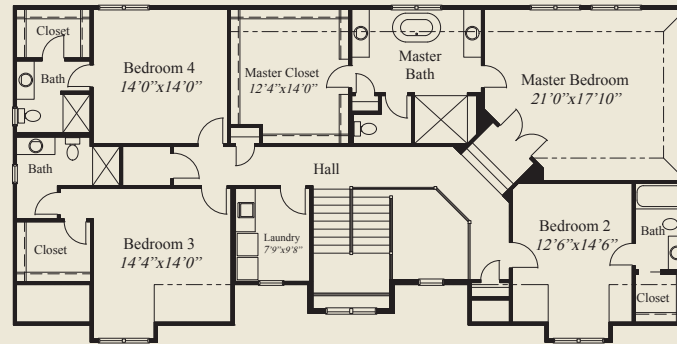
Plan Information

- 5,673 SqFt
- 4 Bedrooms
- 4+ 2 Half Baths
- 3 Car Garage (Oversize)
- Large Front Porch
- Open Foyer with Barrel Archway to Great Room
- Huge Kitchen with Messy Kitchen/Pantry
- 11'9" Ceilings Great Rm/Kitchen/
- Study w/Double Doors
- Elevated Master Suite w/Tub, Oversized Shower
- All Bedrooms w/Private Baths, Walk-in Closets
- Large Covered Deck
- Convenient 2nd Floor Laundry
- Mud Room
- Finished LL w/Family Room, Bar, Flex Room

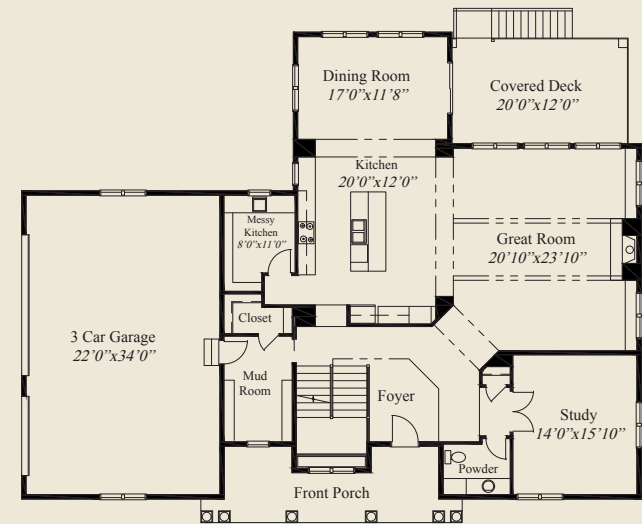
This custom home features a large front porch and an open foyer with a barrel archway to the great room. The huge kitchen includes a messy kitchen/pantry. The great room and kitchen include elevated ceilings, and the spacious study has double doors. A convenient 2nd floor laundry, elevated master suite with tub and oversized shower, all bedrooms with private baths and walk-in closets, and a finished lower level with family room, bar, and flex room, complete this beautiful home.



FINISHED LL



SECOND FLOOR



FIRST FLOOR

© Romanelli & Hughes Building Co.
All home plans present on this brochure are protected by copyright. Reproduction either in whole or in part without written permission is strictly prohibited. All renderings and floor plans are artists' conceptions and are not intended to be an actual depiction of the home or its surroundings.

