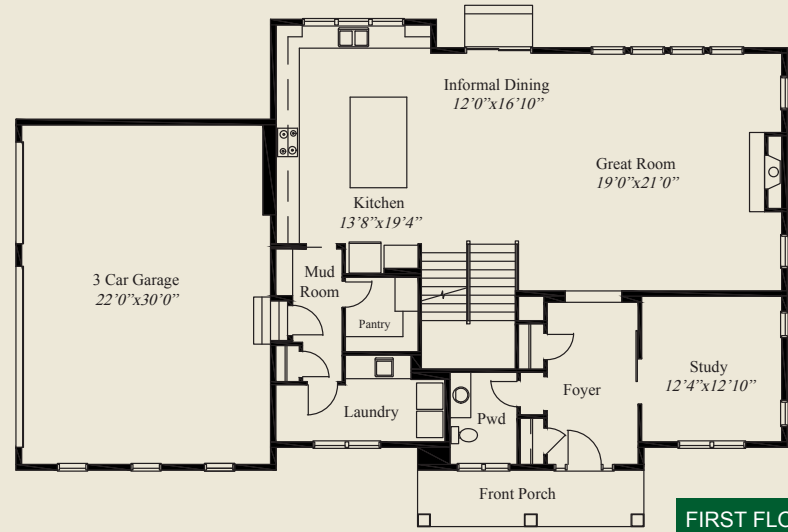
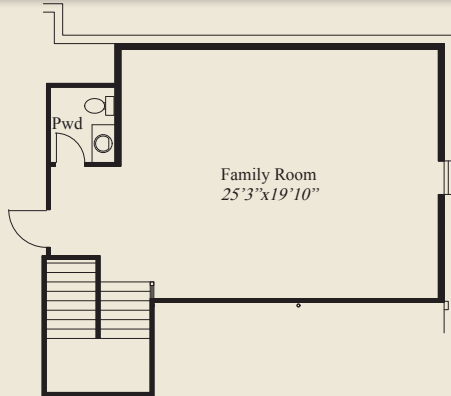




This custom design features 11' ceilings and 8' doors on the 1st floor and 9' ceilings on the 2nd floor. The spacious great room is open to a dining area and a large kitchen. The mudroom includes a walk-in pantry and the private study features a sliding barn door. A spacious laundry room has extra cabinets. The 2nd floor bedrooms, all have walk-in closets, and the master suite includes both a tub and oversized shower, along with a spacious closet. A large bonus room and a finished lower level family room complete this beautiful home.

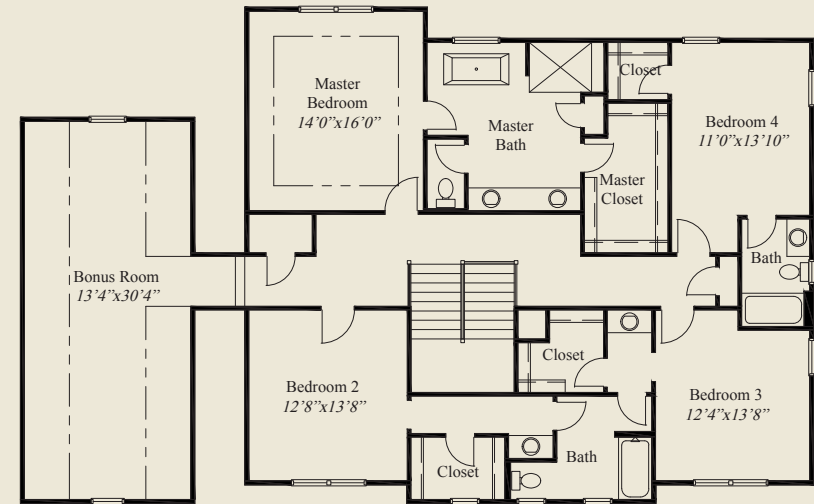


FIRST FLOOR 1,691 SQ.FT.



LOWER LEVEL 613 SQ.FT.

- Plan Information**
- 4,459 SqFt
 - 4 Bedrooms
 - 3 1/2 + 1/2 Baths
 - 3 Car Garage
 - 11' Ceilings and 8' Doors on First Floor
 - 9' Ceiling on Second Floor
 - Mudroom w/Walk-in Pantry
 - Huge Great Room open to Dining & Kitchen
 - Master Suite w/Tub, Shower, Oversize Clst
 - Private Study w/Barn Door
 - Huge Laundry Room w/Extra Cabinets
 - All Bedrooms have Walk-in Closets
 - Enormous Bonus Room
 - Finished Lower Level Family Room



SECOND FLOOR 2,155 SQ.FT.

© Romanelli & Hughes Building Co. All home plans present on this brochure are protected by copyright. Reproduction either in whole or in part without written permission is strictly prohibited. All renderings and floor plans are artists' conceptions and are not intended to be an actual depiction of the home or its surroundings.

