

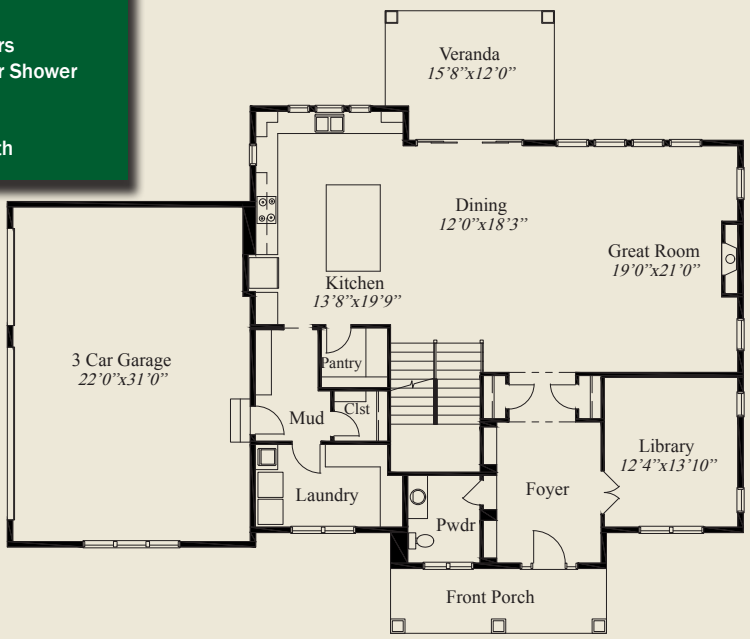


**Plan Information**

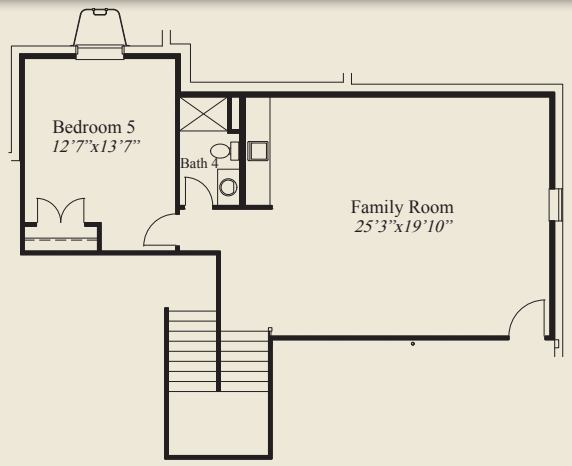
- 4,862 SqFt
- 5 Bedrooms
- 4 1/2 Baths
- 3 Car Garage
- Large Foyer/ 11' Ceilings, 8' Doors 1st Flr
- Huge Open Great Room, Dining, Kitchen
- Walk-in Pantry/ Covered Veranda
- Large Mud Room w/Adjacent Laundry
- Library w/Double Doors /Switchback Stairs
- Owners Suite w/Free Standing Tub, Corner Shower
- Spacious Wardrobe /Huge Bonus Room
- All Bedrooms w/Walk-in Closets
- Finished LL w/Family Rm, Bedroom & Bath



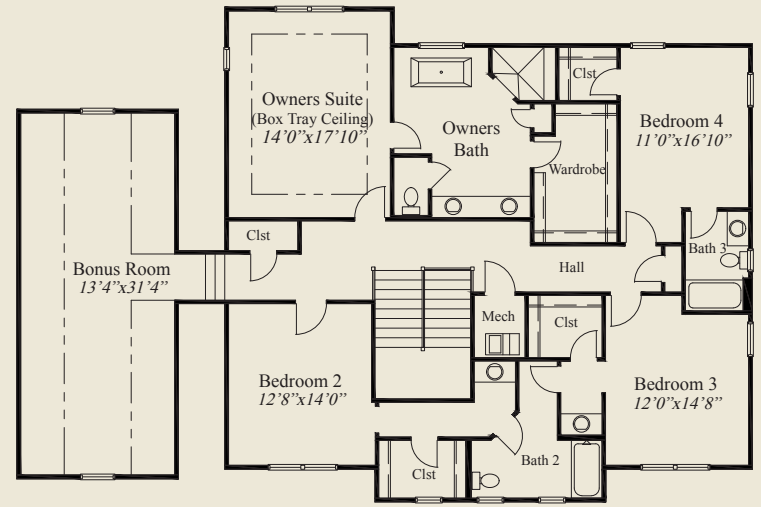
This custom 2 story features a huge foyer, spacious open great room, kitchen & dining, switchback stairs, & 11' ceilings, 8' doors throughout the first floor and 9' ceilings on the 2nd floor. The kitchen includes a large walk-in pantry and the dining area a rear covered veranda. The large mud room is adjacent to a huge laundry. The library includes double doors. The spacious 2nd Flr Owners Suite has a free standing tub, oversize corner shower and huge wardrobe. All bedrooms have walk-in closets and an enormous bonus room completes the second floor. A finished lower level with huge family room, bedroom & full bath, adds to the appeal of this beautiful home.



**FIRST FLOOR 1,778 SQ.FT.**



**LOWER LEVEL 832 SQ.FT.**



**SECOND FLOOR 2,252 SQ.FT.**



© Romanelli & Hughes Building Co.  
 All home plans present on this brochure are protected by copyright. Reproduction either in whole or in part without written permission is strictly prohibited. All renderings and floor plans are artists' conceptions and are not intended to be an actual depiction of the home or its surroundings.