



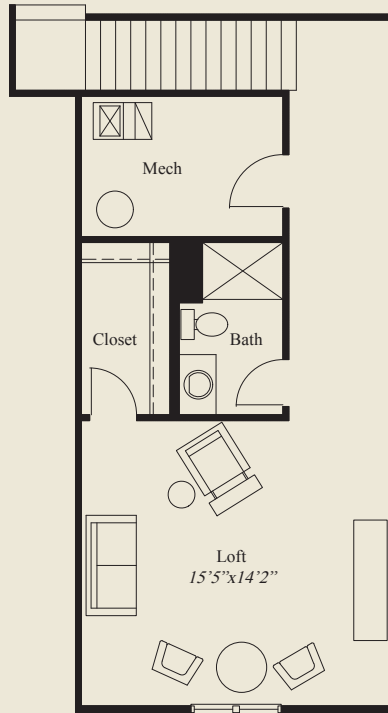
Plan Information

- 2,375 SqFt
- 2 Bedrooms
- 2 Baths
- 2 Car Garage
- 1st Flr. 10' Ceilings, 8' Doors
- Great Room w/coffered Ceiling
- Study/Dining w/Double Doors
- First Floor Master Suite w/ Huge shower
- Second Floor Loft/Storage/opt. Bedroom
- On Slab for Easy Access First Floor Living

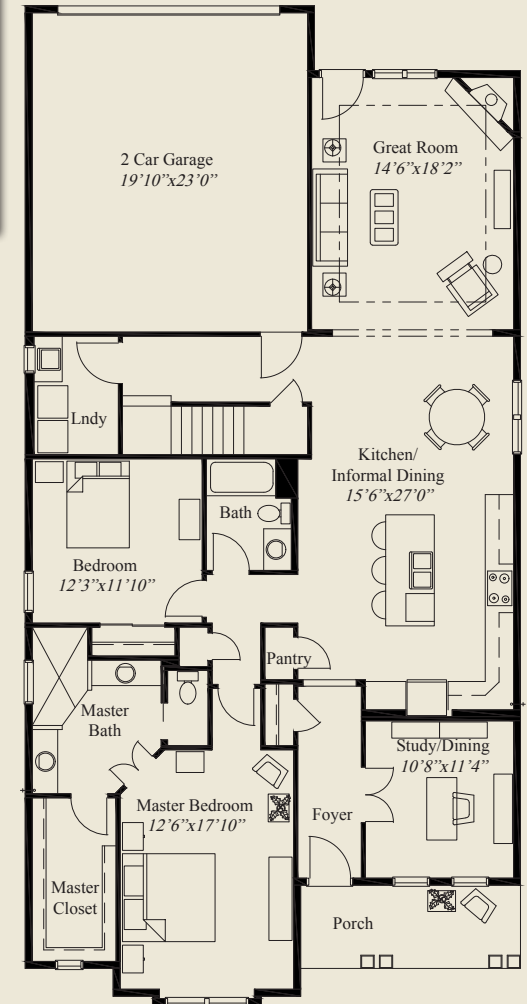
Home Information

This custom patio home offers the convenience of one level living with a second floor loft for flex room/storage space. It features 10' ceilings and 8' doors on the first floor and a large, open kitchen/dining area with island and counter seating. The great room has a coffered ceiling and the formal foyer includes double doors to the optional study/formal dining room. The master suite includes a huge walk-in shower and extra large walk-in closet.

© Romanelli & Hughes Building Co. All home plans present on this brochure are protected by copyright. Reproduction either in whole or in part without written permission is strictly prohibited. All renderings and floor plans are artists' conceptions and are not intended to be an actual depiction of the home or its surroundings.



SECOND FLOOR 519 SQ.FT.



FIRST FLOOR 1,856 SQ.FT.



To Inquire About This Home Contact: Brandie Daur (614) 596-4165