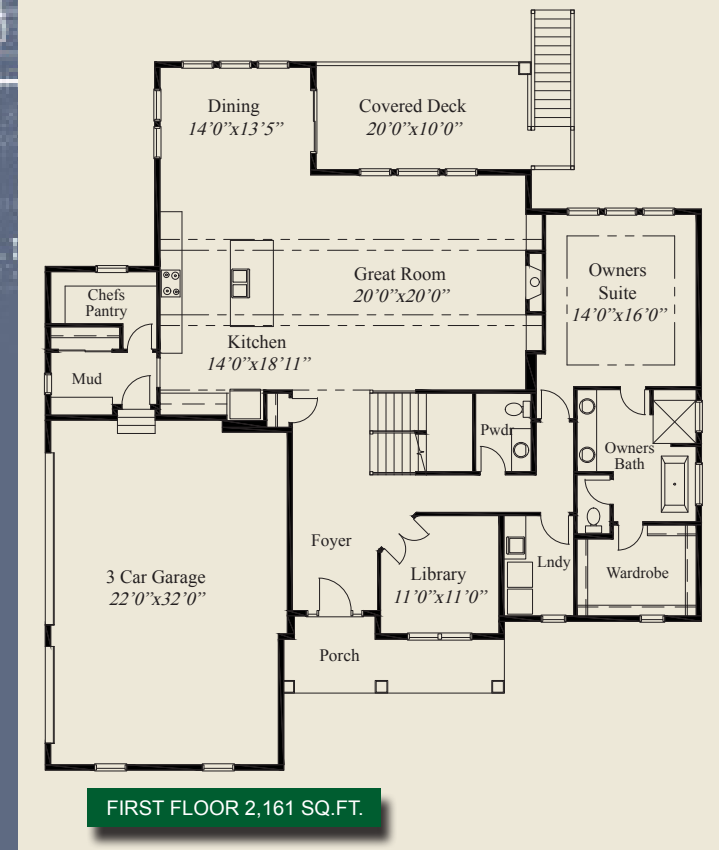
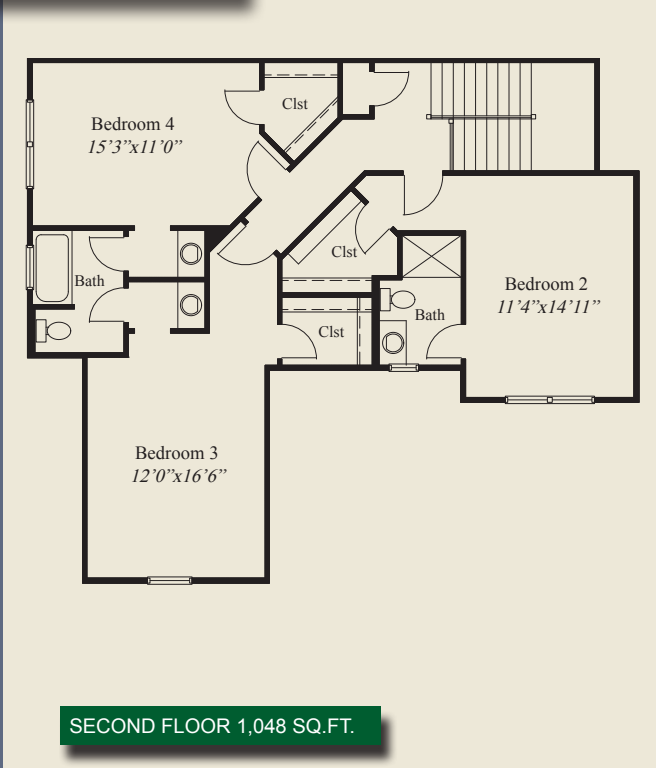
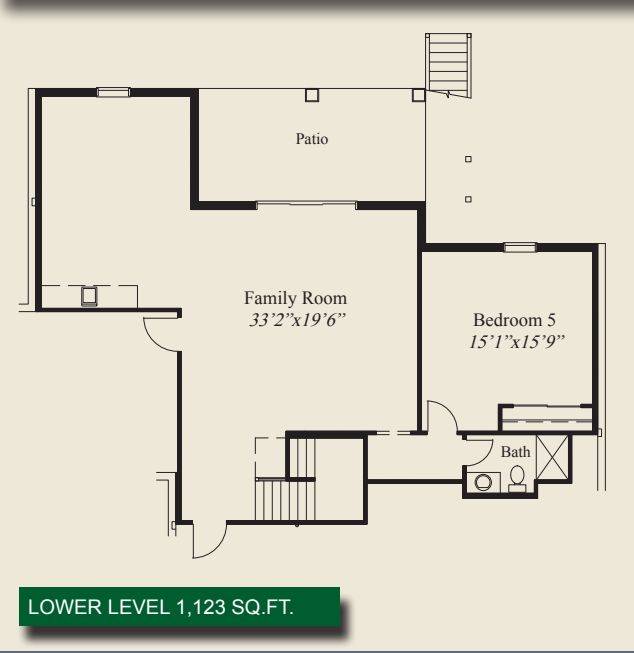




- ### Plan Information
- 4,332 SqFt
  - 5 Bedrooms
  - 4 1/2 Baths
  - 3 Car Garage
  - Large Front Porch
  - 10' First Floor Ceilings w/8' Doors
  - Private Mud Entry w/Adjacent Chefs Pantry
  - 12' Decorative Ceilings in Great Rm & Kitchen
  - Large Rear Covered Deck
  - First Floor Owners Suite w/Shower & Tub
  - Enormous Owners Wardrobe
  - 3 Large Bedrooms w/Walk-in Closets
  - Jack & Jill Style Bathroom
  - Finished LL Walkout w/Family Room, Bedroom



This custom design features open living and entertaining, first floor 10' ceilings and 8' doors, and 12' decorative ceilings in the great room & kitchen. The garage mud entry is adjacent to a chefs pantry and a spacious kitchen. The first floor owners suite has a box tray ceiling, free standing tub, huge shower, and a massive wardrobe. The three large second floor bedrooms all have walk-in closets. The finished LL walkout with a patio, huge family room, and a 5th bedroom and bath, completes this beautiful home.



© Romanelli & Hughes Building Co.  
 All home plans present on this brochure are protected by copyright. Reproduction either in whole or in part without written permission is strictly prohibited. All renderings and floor plans are artists' conceptions and are not intended to be an actual depiction of the home or its surroundings.