



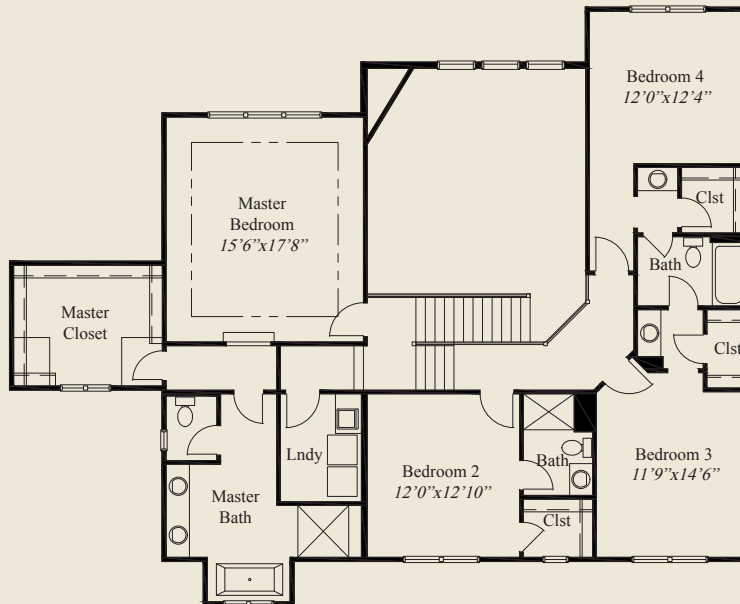
Plan Information

- 3,158 SqFt
- 4 Bedrooms
- 3 1/2 Baths
- 3 Car Split Garage
- Foyer w/Double Doors to Den
- Covered Rear Veranda
- 10' Ceilings, 8' Doors 1st Floor
- Garage Mud Entry w/Bench, Storage Closet
- 2 Story Great Room w/Upper Balcony
- Huge Walk-in Kitchen Pantry
- Master w/Tub, Shower & Huge Closet
- 2nd Floor Laundry Room
- All Bedrooms w/Walk-in Closets
- Lower Level Family Room

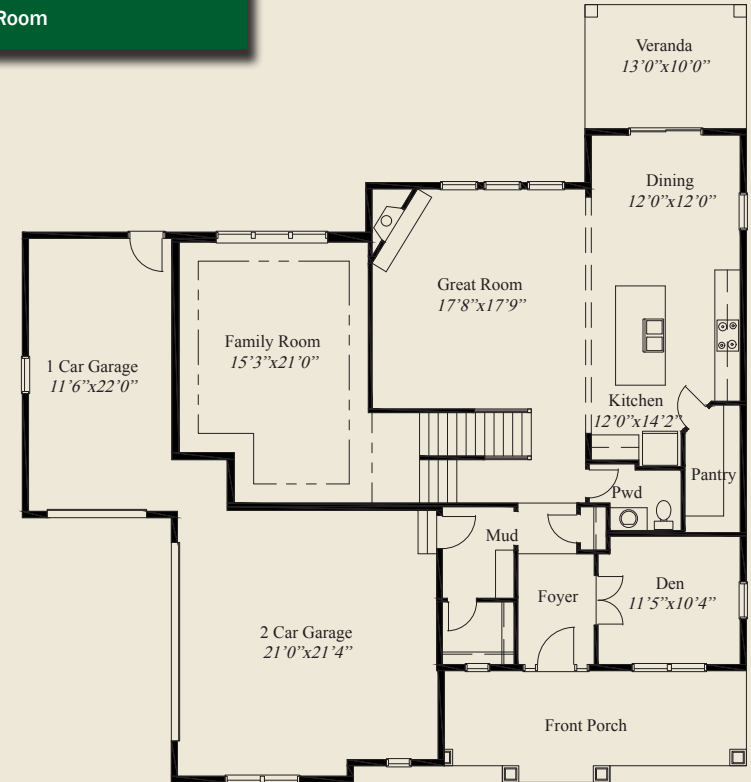
Home Information

This custom split level home features a huge front porch and a 2 story great room. 10' ceilings and 8' doors are throughout the first floor. The foyer has double doors to the study and the mud entry from the garage includes a bench and storage closet. The master suite features a free-standing tub, extra large shower and huge walk-in closet. All bedrooms have walk-in closets. A second floor laundry room and a finished lower level family room complete this beautiful home.

© Romanelli & Hughes Building Co.
All home plans present on this brochure are protected by copyright. Reproduction either in whole or in part without written permission is strictly prohibited. All renderings and floor plans are artists' conceptions and are not intended to be an actual depiction of the home or its surroundings.



SECOND FLOOR 1,636 SQ.FT.



FIRST FLOOR 1,522 SQ.FT.

