



4966 Pesaro Way

Plan Information

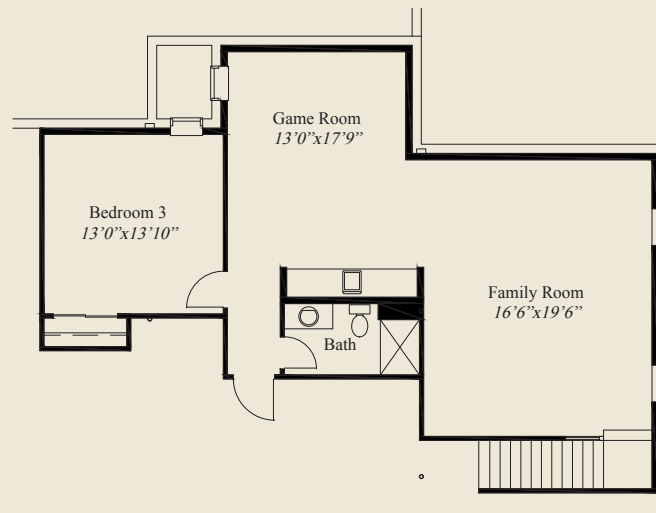
- 3,252 SqFt
- 3 Bedrooms
- 3 1/2 Baths
- 2 Car Garage w/Storage
- 10' Ceilings, 8' Doors
- 12' Beamed Ceiling in Great Room & Kitchen
- Covered Veranda w/12' Ceiling
- Master Suite w/Huge Shower, Walk-in Closet
- Guest Bedroom w/Private Bath
- LL w/ Family Room/Game/Wet Bar/Bedroom

Home Information

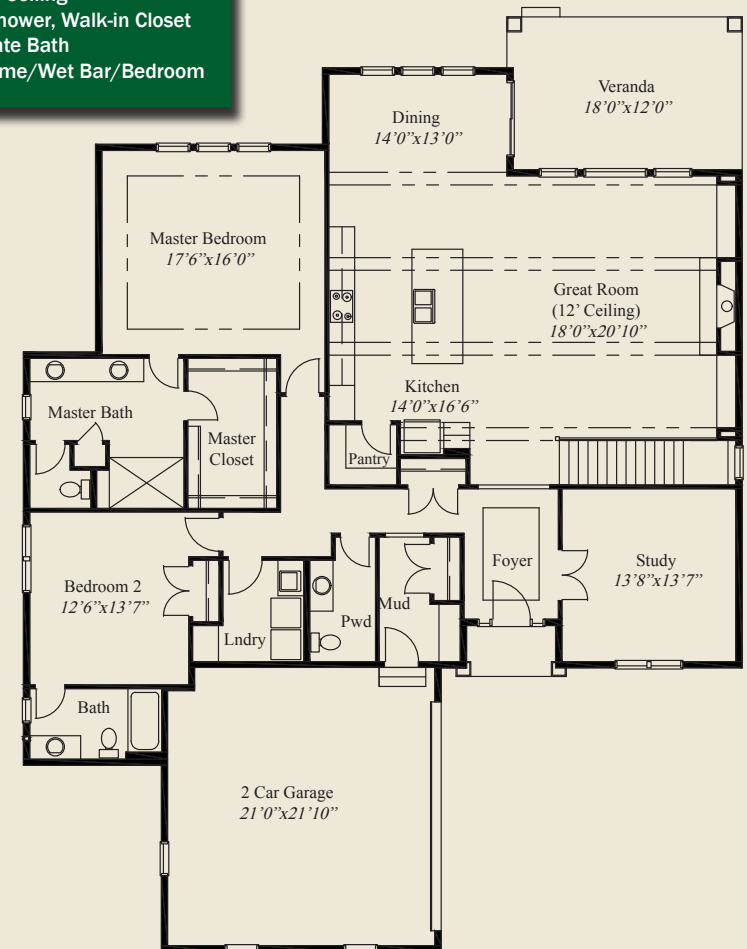
This custom patio home features open entertaining and living and a 12' beamed ceiling in the great room and kitchen. 10' ceilings and 8' doors are throughout. The elegant master suite includes a huge shower and walk-in closet. The mud entry from the garage, a private study with double doors, a covered veranda with a 12' ceiling, and a spacious lower level family room with wet bar, game room, and 3rd bedroom & bath, all add to the appeal of this beautiful home.

© Romanelli & Hughes Building Co.

All home plans present on this brochure are protected by copyright. Reproduction either in whole or in part without written permission is strictly prohibited. All renderings and floor plans are artists' conceptions and are not intended to be an actual depiction of the home or its surroundings.



LOWER LEVEL 898 SQ.FT.



FIRST FLOOR 2,354 SQ.FT.

