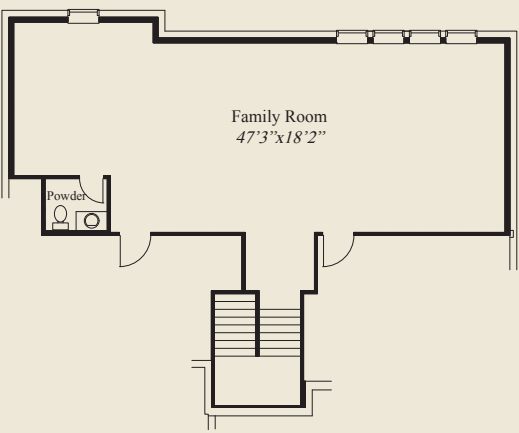


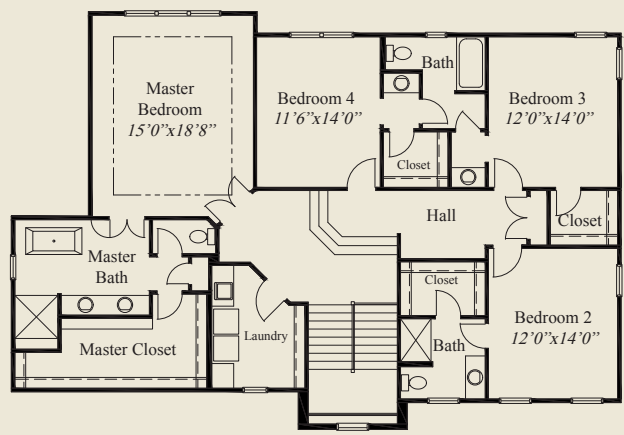


- ### Plan Information
- 4,552 SqFt
  - 4 Bedrooms
  - 3 Baths + 1/2 + 1/2
  - 3 Car Garage
  - Large Front Porch
  - Open Kitchen/Dining/Great Room
  - Huge Kitchen w/Large Pantry
  - First Floor 10' Ceilings, 8' Doors
  - Great Room w/12' Tray Beam Ceiling
  - Switch Back Staircase
  - 2nd Floor Laundry Room
  - Master Suite w/Free-standing Tub
  - All Bedrooms w/Walk-in Closets
  - Finished LL w/Family Room, Pwd

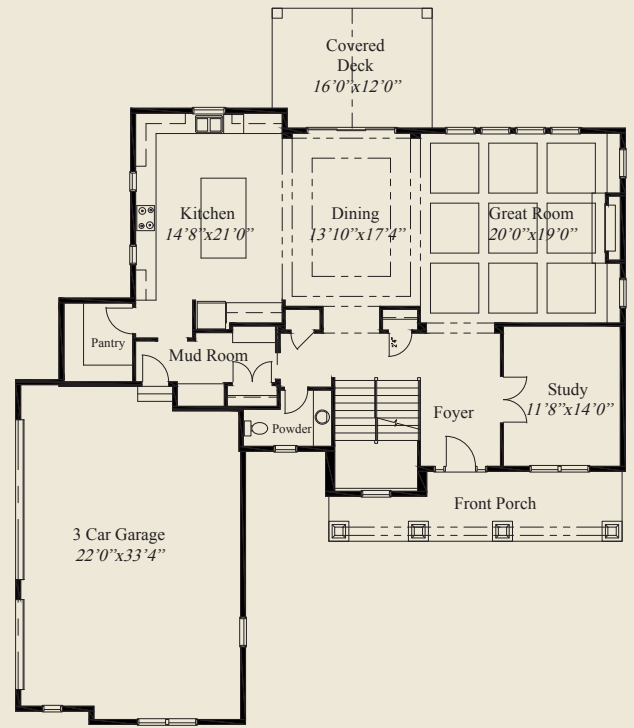
This custom two-story design features a spacious front porch and a 12' beam tray ceiling in the great room. Open living and entertaining and 10' ceilings and 8' doors are throughout the first floor. The huge kitchen has a large walk-in pantry and the dining area is adjacent to a covered veranda. A second floor laundry, huge master suite with free-standing tub, and a massive lower level family room, complete this beautiful home.



LOWER LEVEL



SECOND FLOOR



FIRST FLOOR

© Romanelli & Hughes Building Co.  
 All home plans present on this brochure are protected by copyright. Reproduction either in whole or in part without written permission is strictly prohibited. All renderings and floor plans are artists' conceptions and are not intended to be an actual depiction of the home or its surroundings.

