



735 Terra Court

Plan Information

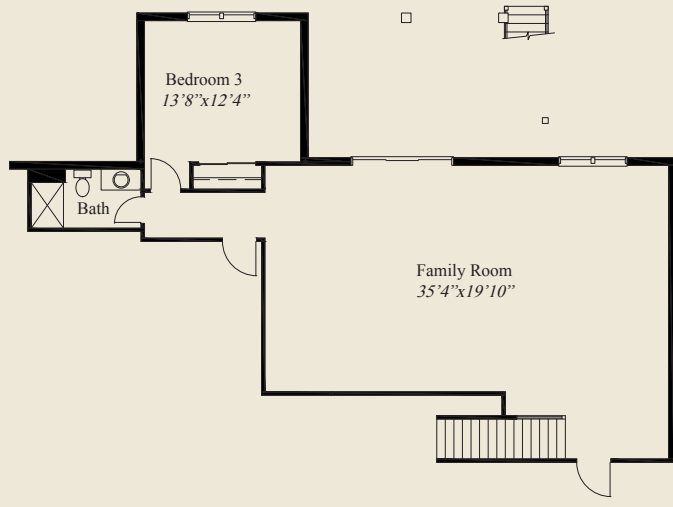
- 3,412 SqFt
- 3 Bedrooms
- 3 1/2 Baths
- 3 Car Garage (Oversize)
- Open Entertaining/Living space
- Rear Covered Veranda
- 10' Ceilings on First Floor
- Box Tray Ceiling in Great Room
- Kitchen w/Walk-in Pantry
- Foyer w/Double Doors to Study
- First Floor Master w/huge Walk-in Closet
- First Floor Guest Bedroom, Private Bath
- Finished LL w/Family Room, Bedroom, Bath

Home Information

This custom ranch is a walk-out on a ravine lot, and features 10' ceilings throughout the first floor with open entertaining and living adjoining a covered veranda. It includes a walk-in pantry, private guest suite, a study with double doors, and a master suite with a huge shower and massive walk-in closet. A finished lower level with family room, bedroom, and bath, complete this beautiful home.

© Romanelli & Hughes Building Co.

All home plans present on this brochure are protected by copyright. Reproduction either in whole or in part without written permission is strictly prohibited. All renderings and floor plans are artists' conceptions and are not intended to be an actual depiction of the home or its surroundings.



LOWER LEVEL 1,144 SQ.FT.



FIRST FLOOR 2,268 SQ.FT.

