

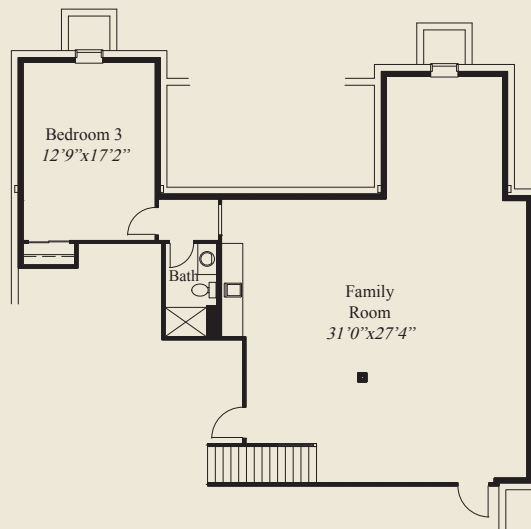


4959 Pesaro Way

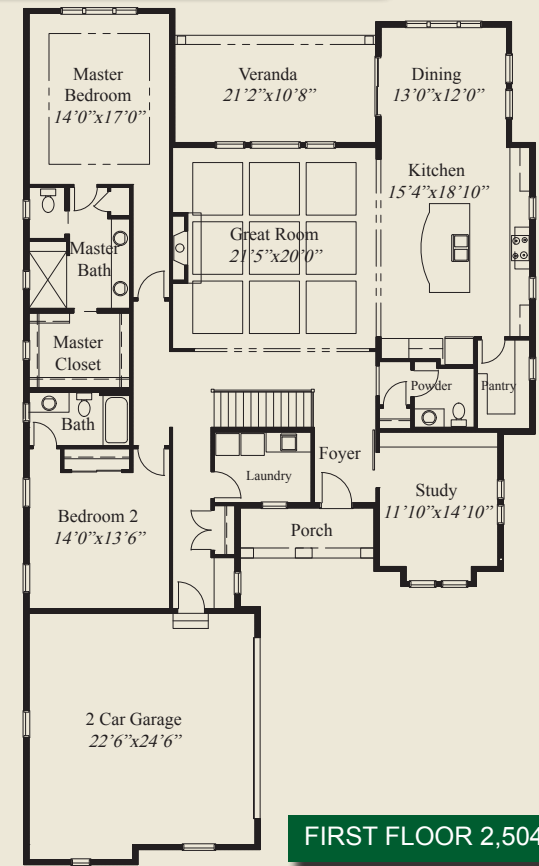
- Plan Information**
- 3,772 SqFt
 - 3 Bedrooms
 - 3 1/2 Baths
 - 2 Car Garage
 - 10' Ceilings & 8' Doors on Main Level
 - 12' Box Beam Ceiling in Great Room
 - Open Entertaining, Living spaces, Veranda
 - Master Suite w/Huge Shower, Walk-in Closet
 - Finished LL w/ Family Room/3rd Bedroom

Home Information

This custom ranch features raised ceilings in the foyer and great room and a sliding barn door to the private study. 10' ceilings and 8' doors are throughout the first floor. The great room has a decorative box beam ceiling and adjacent covered veranda. The elegant master suite includes a huge shower and walk-in closet. The spacious lower level, with a family room and a 3rd bedroom and bath, completes this beautiful home.



LOWER LEVEL 1,268 SQ.FT.



FIRST FLOOR 2,504 SQ.FT.

© Romanelli & Hughes Building Co. All home plans present on this brochure are protected by copyright. Reproduction either in whole or in part without written permission is strictly prohibited. All renderings and floor plans are artists' conceptions and are not intended to be an actual depiction of the home or its surroundings.

