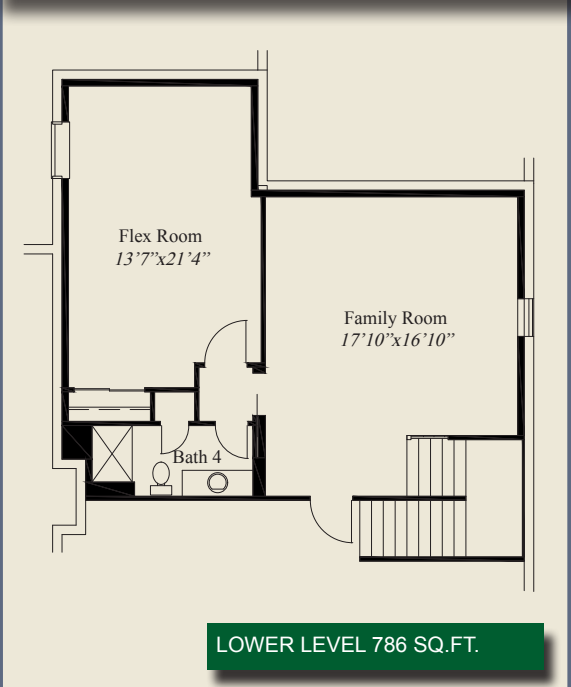




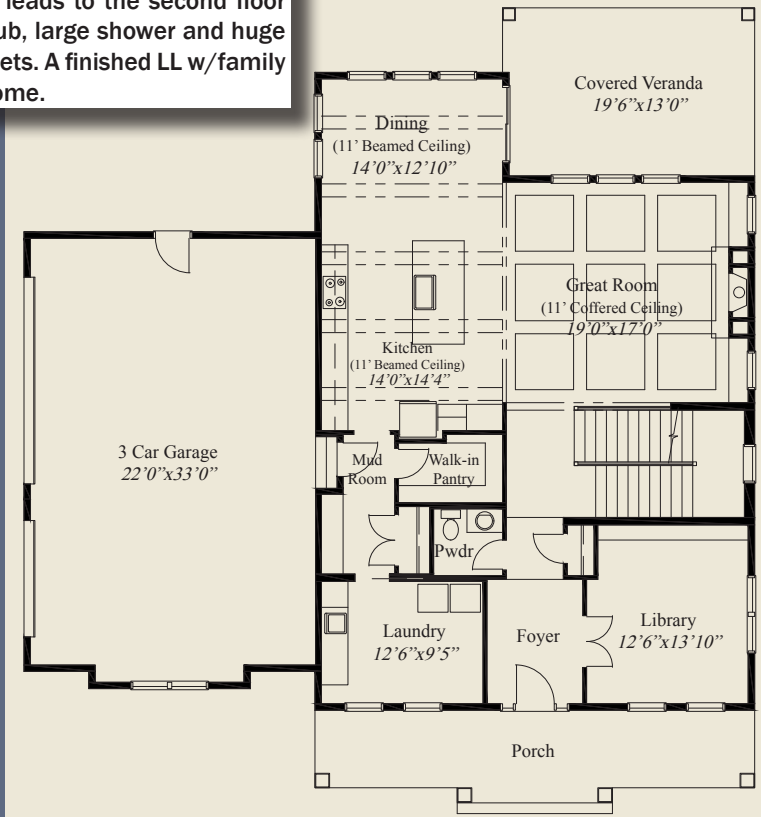
- ### Plan Information
- 4,013 SqFt
 - 4 Bedrooms
 - 4 1/2 Baths
 - 3 Car Garage (Oversize)
 - 11' Beamed Ceiling, 8' Doors on First Floor
 - Foyer w/Double Doors to Library
 - Mud Room w/Walk-in Pantry
 - Covered Veranda
 - Switchback Stairs w/Windows
 - Master Suite w/Free Standing Tub, Huge Shower
 - Spacious Wardrobe
 - All 2nd Floor Bedrooms w/Walk-in Closets
 - Finished LL Family Room, Flex Room, Bath



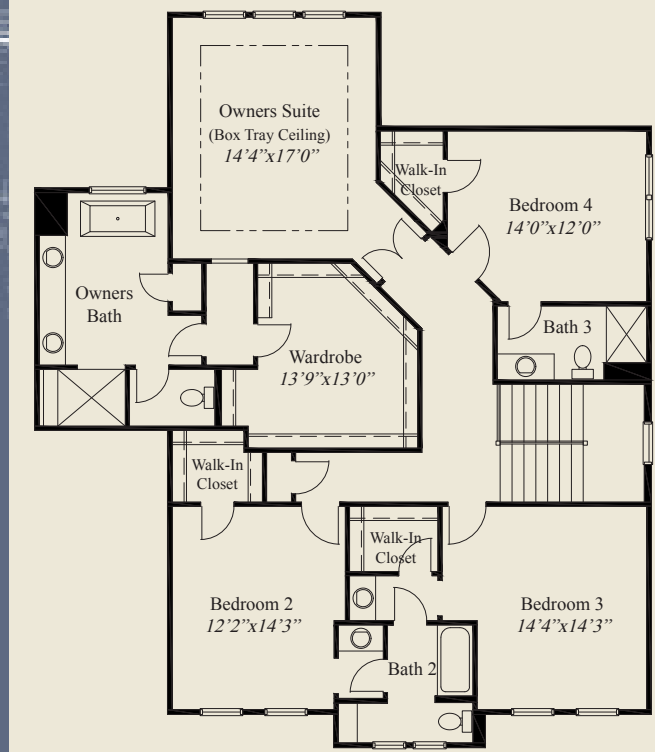
This custom 2 story features 11' decorative ceilings and 8' doors on the first floor. The formal foyer has double glass doors to the library. The dining area is adjacent to a covered veranda. The kitchen includes a mud room entry w/large walk-in pantry. Switchback stairs w/windows at each landing leads to the second floor spacious master suite w/double doors, free standing tub, large shower and huge wardrobe. Three other bedrooms all include walk-in closets. A finished LL w/family room, flex room & full bath, completes this beautiful home.



LOWER LEVEL 786 SQ.FT.



FIRST FLOOR 1,518 SQ.FT.



SECOND FLOOR 1,709 SQ.FT.



© Romanelli & Hughes Building Co. All home plans present on this brochure are protected by copyright. Reproduction either in whole or in part without written permission is strictly prohibited. All renderings and floor plans are artists' conceptions and are not intended to be an actual depiction of the home or its surroundings.