

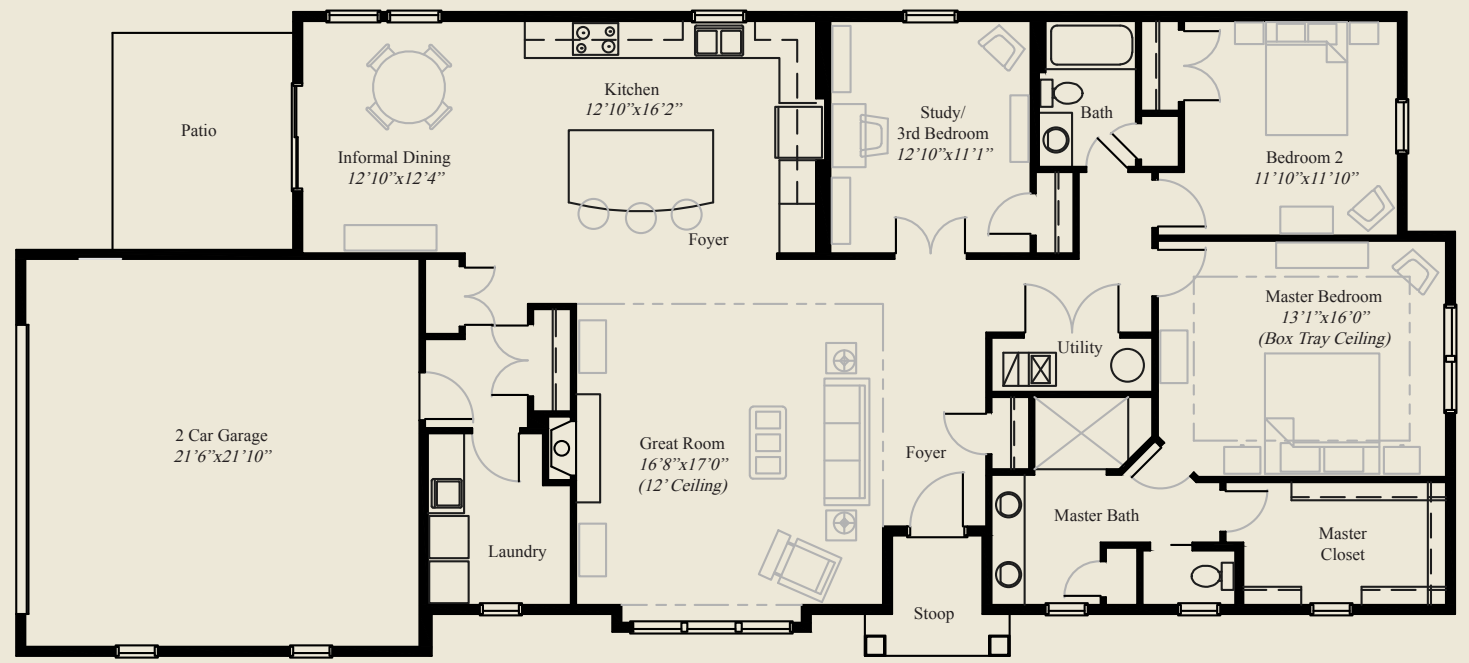


- Plan Information**
- 1,952 SqFt
 - 2 Bedrooms
 - 2 Baths
 - 2 Car Garage
 - Open Kitchen/Great Room/Dining
 - Kitchen w/Island Seating, Informal Dining
 - 10' Ceilings, 8' Doors
 - Raised Ceilings in Great Room
 - Master Bedroom w/Box Tray Ceiling
 - Study/Optional 3rd Bedroom w/Dbl doors
 - On Slab for Easy Access First Floor living

Home Information

This custom ranch features open concept first floor living and entertaining and 10' ceilings and 8' doors. The spacious great room has a raised ceiling. A private study/optional 3rd bedroom includes double doors from the formal foyer. The gourmet kitchen includes island seating as well as a dining area by the patio. The master bedroom with a box tray ceiling, an extended vanity, huge shower, and a spacious closet, completes this beautiful home.

© Romanelli & Hughes Building Co.
All home plans present on this brochure are protected by copyright. Reproduction either in whole or in part without written permission is strictly prohibited. All renderings and floor plans are artists' conceptions and are not intended to be an actual depiction of the home or its surroundings.



FIRST FLOOR 1,952 SQ.FT.

