



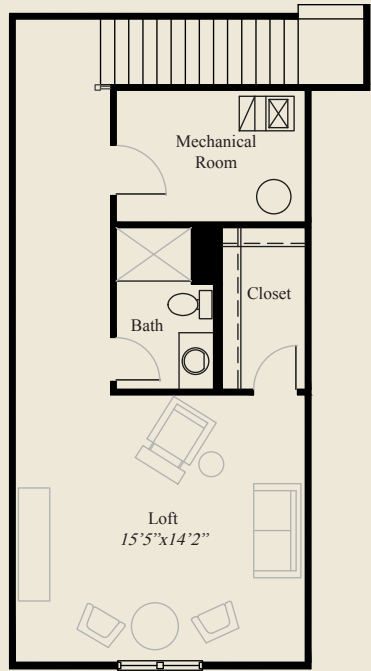
© Romanelli & Hughes Building Co.
 All home plans present on this brochure are protected by copyright. Reproduction either in whole or in part without written permission is strictly prohibited. All renderings and floor plans are artists' conceptions and are not intended to be an actual depiction of the home or its surroundings.

Plan Information

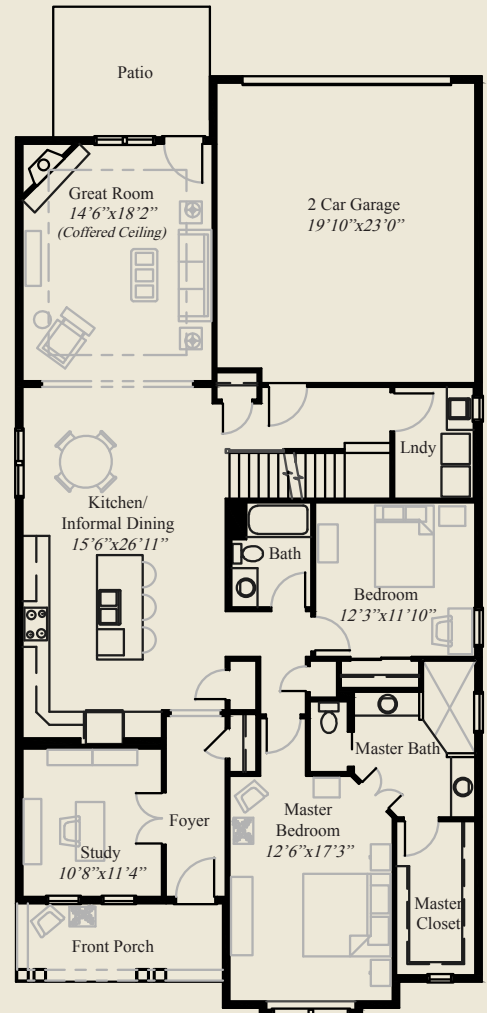
- 2,365 SqFt
- 2 Bedrooms
- 3 Baths
- 2 Car Garage
- Large Front Porch
- Study w/Double Doors
- First Floor Master Suite w/ huge Closet
- First Floor 10' Ceilings, 8' Doors
- Coffered Ceiling Great Room
- Second Floor Loft/or extra Bedroom
- Basement for Storage or Finishing

Home Information

This patio home features 10' ceilings and 8' doors on the first floor and open concept living and entertaining. A formal foyer leads to a study w/ double doors, a large eat-in kitchen with island seating and a spacious great room with a coffered ceiling. The first floor master has a huge closet, split vanities, and oversized shower. A guest bedroom completes the first floor. The second floor includes a loft or optional bedroom w/bath and large closet. A basement for extra storage (with potential to finish) adds to the appeal of this beautiful home.



SECOND FLOOR 509 SQ.FT.



FIRST FLOOR 1,856 SQ.FT.

