

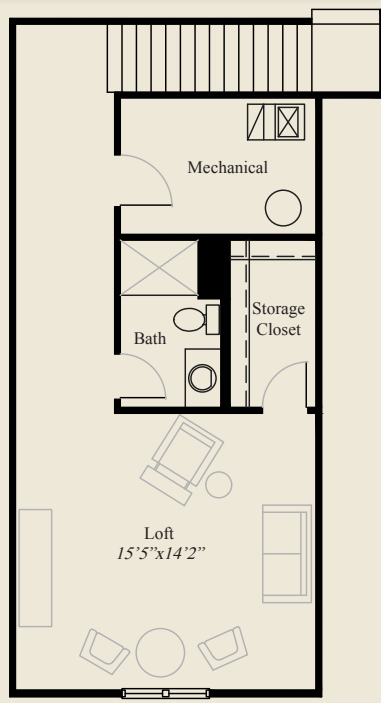


- Plan Information**
- 2,365 SqFt
 - 2 Bedrooms
 - 3 Baths
 - 2 Car Garage
 - Large Front Porch
 - Study w/Double Doors
 - First Floor Master Suite w/ huge Closet
 - Second Floor Loft/or extra Bedroom
 - Second Floor Storage
 - On Slab for easy access first floor living

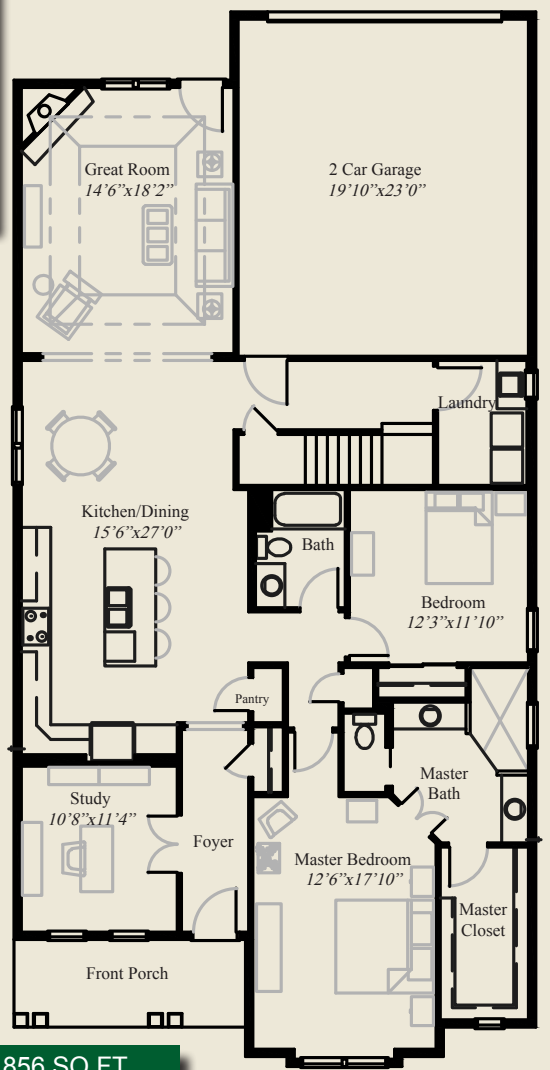
Home Information

This custom patio home offers easy access first floor living with a large front porch and open entertaining, dining, and kitchen space. A formal foyer leads to a private study w/double doors. The first floor master suite has a huge closet, his/her vanities, and oversized shower. A guest bedroom completes the first floor. The second floor features a loft or optional bedroom w/bath and a large storage closet.

© Romanelli & Hughes Building Co. All home plans present on this brochure are protected by copyright. Reproduction either in whole or in part without written permission is strictly prohibited. All renderings and floor plans are artists' conceptions and are not intended to be an actual depiction of the home or its surroundings.



SECOND FLOOR 509 SQ.FT.



FIRST FLOOR 1,856 SQ.FT.

