



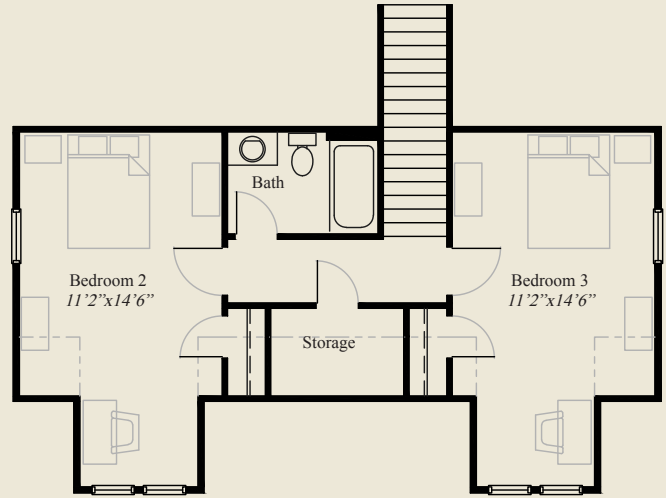
- Plan Information**
- 2,387 SqFt
 - 3 Bedrooms
 - 2 1/2 Baths
 - 2 Car Garage
 - Screen Room
 - Large Front Porch
 - Study w/Double Doors
 - First Floor Master Suite w/ huge closet
 - Second Floor Large Storage Closet
 - On Slab for easy access first floor living

Home Information

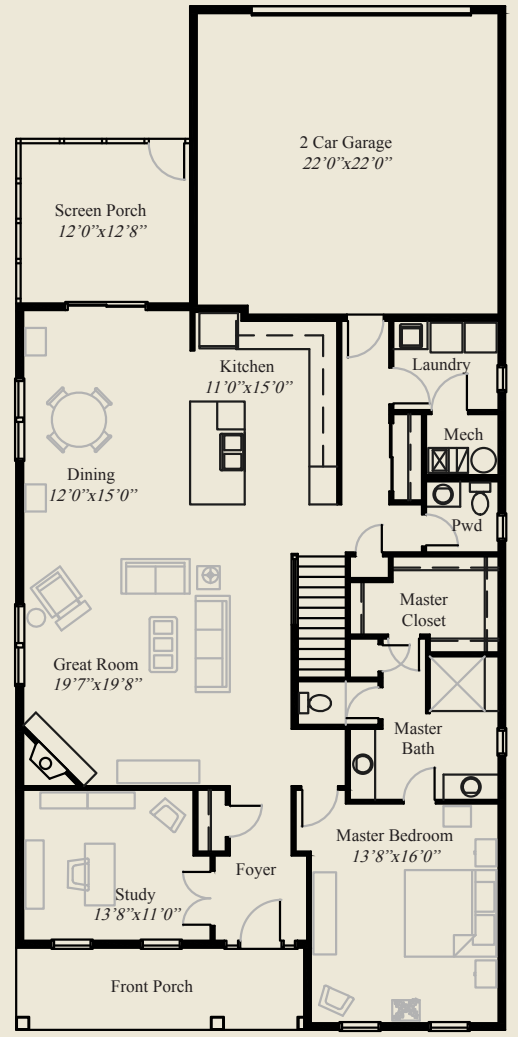
This custom patio home offers easy access first floor living with a large front porch and open entertaining, dining, and kitchen space. A formal foyer leads to a private study w/double doors.

The kitchen includes a large island and a dining area with an adjacent screened porch. The first floor master suite has a huge closet and the second floor includes two additional bedrooms and a large storage closet.

© Romanelli & Hughes Building Co. All home plans present on this brochure are protected by copyright. Reproduction either in whole or in part without written permission is strictly prohibited. All renderings and floor plans are artists' conceptions and are not intended to be an actual depiction of the home or its surroundings.



SECOND FLOOR 639 SQ.FT.



FIRST FLOOR 1,748 SQ.FT.

