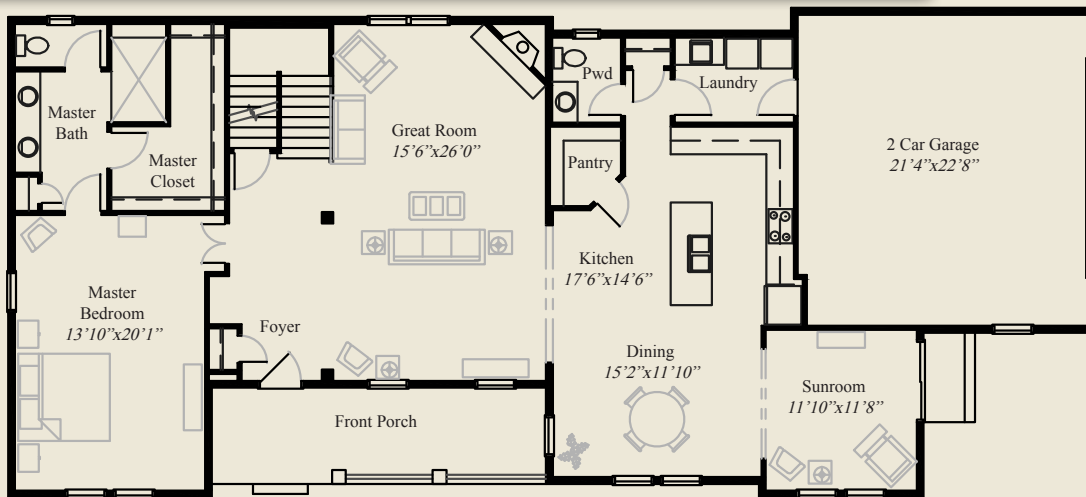


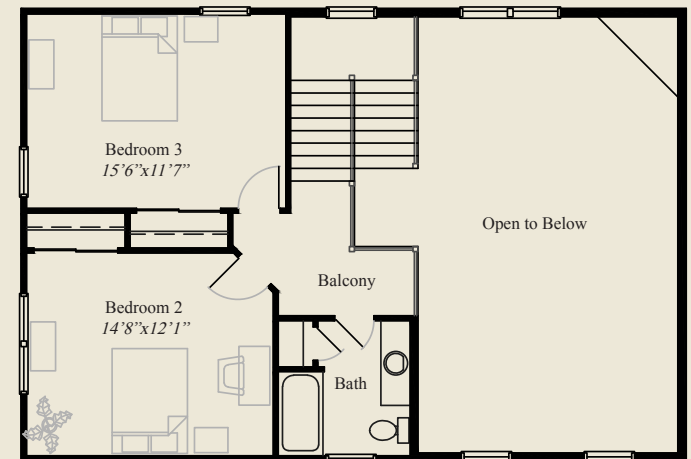


This custom home features 10' ceilings and 8' doors on the first floor and open living and entertaining areas. The spacious great room has a raised ceiling and corner fireplace. The first floor master with a double door entry has an oversized shower and huge walk-in closet. The kitchen includes a walk-in pantry and the dining area has an adjacent sunroom. There are two additional bedrooms, a full bath, and a balcony upstairs. A full basement, for storage or potential finishing, completes this beautiful home.

- Plan Information**
- 2,501 SqFt
  - 3 Bedrooms
  - 2 1/2 Baths
  - 2 Car Garage
  - 10' Ceilings, 8' Doors on First Floor
  - Large Covered Front Porch
  - Raised Ceiling Great Room
  - 1st Flr. Master Suite w/double doors
  - Sunroom
  - 2 Bedrooms upstairs w/Bath, Balcony
  - Full Basement



FIRST FLOOR 1,880 SQ.FT.



SECOND FLOOR 621 SQ.FT.



© Romanelli & Hughes Building Co.  
 All home plans present on this brochure are protected by copyright. Reproduction either in whole or in part without written permission is strictly prohibited. All renderings and floor plans are artists' conceptions and are not intended to be an actual depiction of the home or its surroundings.