

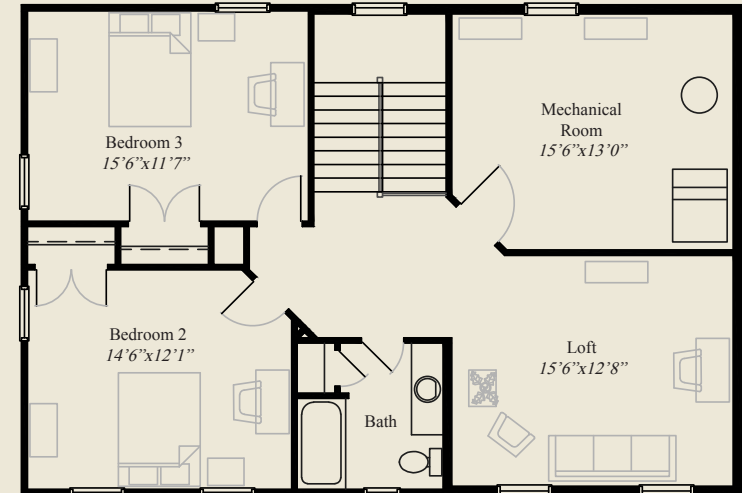


This custom home is on a slab for easy access first floor living. It features 10' ceilings and 8' doors on the first floor and open living and entertaining areas. The spacious great room has a corner fireplace. The first floor master with a double door entry has an oversized shower and huge walk-in closet. The kitchen includes a walk-in pantry and adjacent sunroom. An upstairs loft along with two additional bedrooms, and a mech/storage area, all add to the appeal of this beautiful home.

- Plan Information**
- 2,951 SqFt
 - 3 Bedrooms
 - 2 1/2 Baths
 - 2 Car Garage
 - 10' Ceilings, 8' Doors on First Floor
 - Large Covered Front Porch
 - Open Gourmet Kitchen/Dining/Great Room
 - 1st Flr. Master Suite w/double doors
 - Sunroom
 - Loft and 2 Bedrooms upstairs w/Mech. Rm
 - On Slab for Easy Access First Floor Living



FIRST FLOOR 1,880 SQ.FT.



SECOND FLOOR 1,071 SQ.FT.



© Romanelli & Hughes Building Co.
 All home plans present on this brochure are protected by copyright. Reproduction either in whole or in part without written permission is strictly prohibited. All renderings and floor plans are artists' conceptions and are not intended to be an actual depiction of the home or its surroundings.